

STORMDRAINS

Stormdrains prevent flooding. Pollutants from yards and streets like pet waste, fertilizer, pesticide, oil, grass clippings, leaves, and trash are carried by stormwater into our natural areas where they can harm fish and other wildlife.



**STORMDRAINS
DO NOT LEAD TO
treatment plants**

Many local creeks drain to sinkholes where stormwater enters the underlying aquifer. The aquifer is our water source and also feeds Florida's treasured springs.



**ONLY THE
RAIN DOWN THE
DRAIN**

Call the Clean Creeks Hotline to report illegal dumping, grass clippings, color changes, and digging in creeks. You can also download Alachua County Connects or 311GNV apps. These apps are connected and allow citizens to report a myriad of issues.



RESOURCES

View our entire BMP series at:
AlachuaCountyWater.org

Alachua County
Environmental Protection Department
MyYardOurWater.org

Gainesville Clean Water Partnership
GainesvilleCreeks.org

Alachua County
Hazardous Waste Collection Center
AlachuaCountyHazWaste.org

Florida Yards and Neighbors
FloridaYards.org

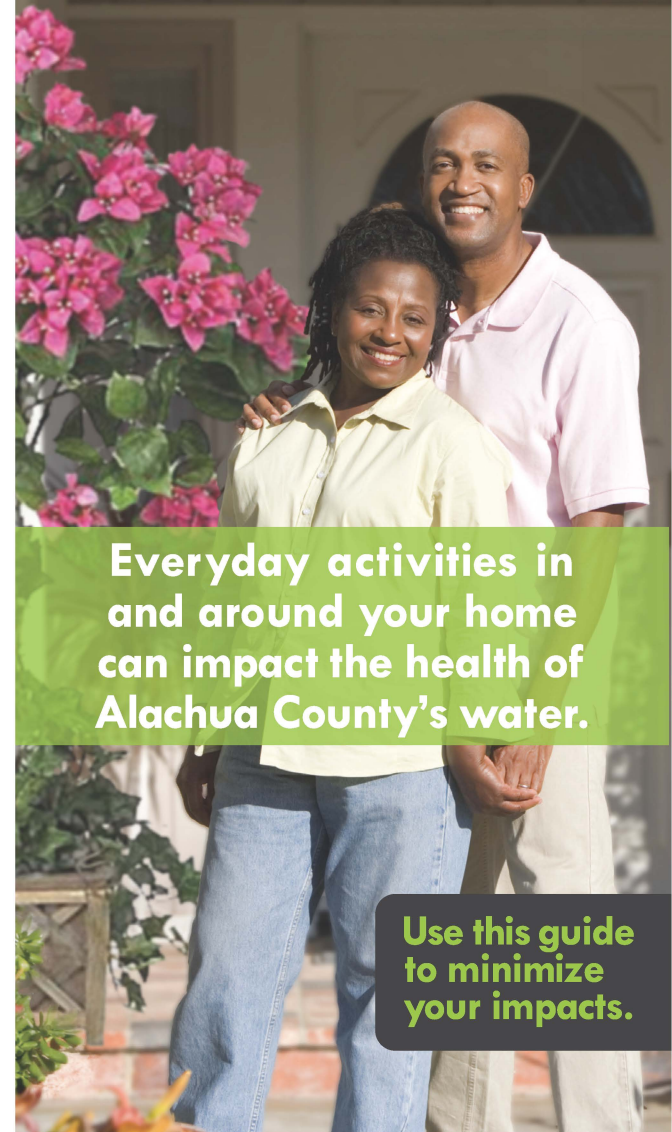
IFAS Extension
ifas.ufl.edu



City of
Gainesville

BMP

BEST MANAGEMENT PRACTICES
FOR HOMEOWNERS



Everyday activities in
and around your home
can impact the health of
Alachua County's water.

Use this guide
to minimize
your impacts.

LANDSCAPING

By following these tips, you can maintain a beautiful yard that saves time, energy, and money while protecting local water quality.

- Select native and Florida Friendly drought tolerant species.
- Group plants with similar water needs and mulch planted beds (NO Cypress mulch).
- Install and maintain rainfall shut off devices for automatic sprinkler systems (It's the Law!).
- Only water when plants show signs of stress (folded leaf blades, footprints remain visible in grass).
- Eliminate the use of fertilizers, pesticides, and herbicides in your yard.
- Fertilizing is only permitted March thru June. Nitrogen must be in at least a 50% slow release form. Phosphorus may only be used if a soil or tissue test confirms it is needed.
- Blow grass clippings back into your yard. It is illegal to direct any yard waste into the street or directly into stormdrains.

POOL

- Verify pool plumbing is not connected to the stormdrain system. It is illegal to drain chlorinated pool water into the street, stormdrain, creek, or other water body.
- Drain your pool to a grassy area, after one week of no chemical additions.

PET WASTE

- Pet waste can spread disease and pollute our waterways with bacteria. Clean up after your pet at home and in the community.



SCOOP IT!



BAG IT!



TRASH IT!

KITCHEN GREASE

Grease blockages in the sewer system can cause raw sewage to leak into our creeks or into your home.

- Collect cooking grease in a container (like a soup can), allow to cool and throw it in the trash or bring it to the Household Hazardous Waste Collection Center (HWCC) where it will be used to make biodiesel fuel.
- Wipe excess grease out of pans with a paper towel.

PAINTING

- Never clean brushes or rinse paint containers into a street, gutter, storm drain, or creek.
- Paint brushes used with water-based paint may be rinsed in a sink or drain that is connected to indoor plumbing (leads to a water treatment plant).
- If you have a septic system, rinse water-based paint brushes in a grassy area.
- Brushes and other items used with oil-based paint should be taken to the HWCC for proper disposal.
- Take any excess paint to an Alachua County Hazardous Waste Collection Center.

PRESSURE WASHING

- Minimize water use when pressure washing.
- Do not use a cleaner unless you really need one – and if you do, just spot treat.
- Direct pressure washing waste to a grassy area.
- If water will flow to a stormdrain, the drain must be blocked and the water must be collected.



VEHICLE AND GARAGE

- Use a commercial car wash or wash your car in a grassy area to allow soapy water to filter through soil. Biodegradable soap is best.
- Check your car, boat, motorcycle, and other machinery for leaks and make repairs ASAP.
- Clean up spilled fluids with kitty litter and dispose of it at the HWCC.
- Recycle used oils and automotive fluids at participating stations or at the HWCC.

SEPTIC SYSTEMS

- Have your system evaluated by a professional every 3-5 years and pumped as recommended.
- Septic systems do not remove nitrogen. Upgrade to an advanced system that removes nutrients.
- Avoid bleach and harsh agents, and bring household chemicals to the HWCC.

ALACHUA COUNTY HAZARDOUS WASTE
COLLECTION CENTER (HWCC)

(352) 334-0440
5125 NE 63RD AVE